

## • 2024 PARTNERSHIP OPPORTUNITIES •



nourishing

# HOPE

*Food for today. Hope for tomorrow.*

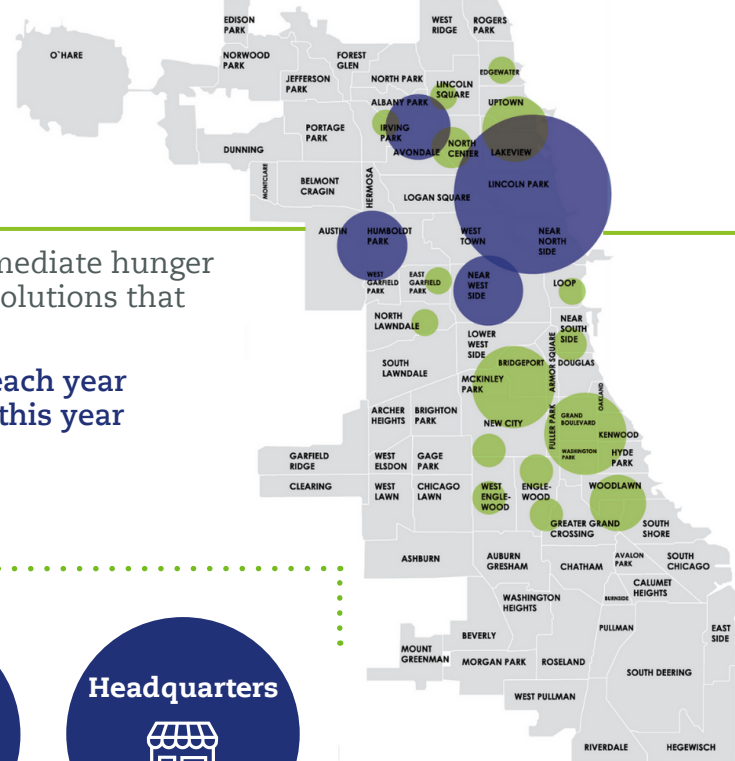
## TOGETHER

At Nourishing Hope, formerly known as Lakeview Pantry, partnerships expand our reach and bolster our vision of serving more people in need. Each year, the corporate, foundation and small business community provide meals and social services to tens of thousands of Chicago families in need of support. These partnerships support our signature programs like our online market, our home delivery program for older adults and people with disabilities, and our health and hope program, which partners with local hospitals to help patients experiencing food insecurity.

Partnerships also allow us to continue the essential work of our mental health counseling and social services programming, which support communities across Chicago.



# NOURISHING HOPE IN CHICAGO



Nourishing Hope's approach focuses on meeting the immediate hunger needs of our neighbors, then moving on to longer-term solutions that help them build for the future.

We distribute the equivalent of over **4 million** meals each year and expect to provide more than **200,000 services\*** this year through our innovative programming.

\*includes repeat visitors to our food and social service programs

## Programs include:

**Sheridan Market**  
  
 3945 N. Sheridan

**El Mercadito**  
  
 3535 W. North Ave

**The Hub**  
  
 5151 N. Ravenswood

**Headquarters**  
  
 1716 W. Hubbard St.

**Home Delivery**

**Online Market**

**Health & Hope**

**Social Services**

**Mental Health Counseling**

Social and Mental Wellness Services are available virtually and in person at multiple locations.

## NOURISHING HOPE'S REACH



30,000+ monthly website visits



3,400+ Twitter followers



Email database of 60,000+



4,300+ Instagram followers



5,000+ Facebook followers



2,200+ LinkedIn followers



## RESPONDING TO THE CALL

When the pandemic hit in 2020, Nourishing Hope was poised to quickly respond and meet a historic need for food assistance. We've continued to see elevated service levels, most recently exacerbated by the inflation-related spike in food prices.

In fiscal year 2023, which ended on March 31, we saw visits to our food programs increase more than 43% percent compared to last year. In particular, we've seen a significant increase in the number of families with young children walking through our doors.



**43% increase**

in visits to our food programs from 2022 - 2023

*nourishing HOPE partnership opportunities*

# ENGAGEMENT OPPORTUNITIES



## PHILANTHROPIC GIVING

We need your support. This year, our costs have also increased because of inflation.

Monetary gifts from our partners ensure the financial health of our agency as we serve our neighbors and innovate new programs to meet their needs.

Nourishing Hope has multiple partnership levels that ensure year-round recognition.

A transformational gift from The Thierer Family Foundation helped launch our Online Market program in 2019.



## EMPLOYEE ENGAGEMENT

As a nonprofit organization, spreading awareness of Nourishing Hope's mission and the work we do is vital to our success.

Companies that engage their employees in our work are helping to mold the philanthropic landscape of our city.

Nourishing Hope has many opportunities to get your team involved including group volunteer opportunities, a team fundraising platform, and more!

Want to learn more about hunger or mental wellness in Chicago? Host a "Lunch & Learn" delivered by our staff. Our team provides impact sessions to celebrate employees and philanthropic investments.



## CAUSE MARKETING

The communities we serve are at the heart of Nourishing Hope and that includes our local businesses.

Cause marketing efforts help spread the word about the work we do while stimulating the local economy.

Support Nourishing Hope and showcase your philanthropy by hosting a 10% discount day or donating a portion of proceeds from an event.

Previous campaigns include the Lakeview Roscoe Village Chamber of Commerce Restaurant Week and a 15% Give Back Weekend with Jersey Mike's.



Toby Eveland of Saul Ewing presents CEO, Kellie O'Connell, with a donation as part of a holiday giving initiative to address food insecurity and hunger.

*nourishing HOPE partnership opportunities*



Sweetgreen team members donate meals to celebrate a new location's grand opening.



A volunteer group from GrubHub organizes produce for our online market program at The Hub location.

# ENGAGEMENT OPPORTUNITIES



## FOOD DONATIONS

Nourishing Hope distributes the equivalent of nearly 4 million meals to our communities each year.

More than 60% of the food distributed is donated from our grocery, retail, and food manufacturing partners.

Trader Joe's donated 390,000 pounds of fresh food last year!

Donate products for us to distribute, or host a food drive at your organization to help stock our shelves.



## IN-KIND DONATIONS

In an effort to reinvest fundraising dollars directly into our programs, Nourishing Hope accepts donations of goods and services beyond food.

We pride ourselves on the ability to provide more than food to our program participants; we often have personal hygiene items, cleaning supplies, and pet food on hand.

A local teen hosted a hygiene item drive for their Bar Mitzvah and assembled kits for Nourishing Hope. Donate a silent auction item for our annual Nourishing Hope Gala.



## VOLUNTEER SUPPORT

We rely on our amazing volunteer corps to keep our programs running smoothly. With 50+ full-time staff members, we couldn't do it without the thousands of individuals and groups we see each year.

Volunteers help with picking up donations, sorting food for quality, packing boxes for distribution, and putting food into the hands of families.

With opportunities at four locations, six days a week, we would love to have your group join us!

Throughout April, Conagra Brands celebrates their "Month of Service" by sending multiple groups of employees to Nourishing Hope to volunteer.

# PARTNER BENEFITS



**GOLDEN APPLE**



**CREAM OF THE CROP**



**TOAST TO YOU**



**RAISIN TO SMILE**



**BREAD & BUTTER**

Commitment Level	\$100,000+ or 500k lbs food	\$75,000+ or 250k lbs food	\$50,000+ or 100k lbs of food	\$25,000+ or 50k lbs of food	\$10,000 or 25k lbs of food
Yearly Volunteer Opportunities With Priority Scheduling	4 Group Exclusives	3 Group Exclusives	2 Group Exclusives	2 Group Exclusives	1 Group Exclusive
Annual Partnership Meeting with NH Team	✓	✓	✓		
Recognition in Monthly Newsletter & Annual Report	✓	✓	✓	✓	✓
Dedicated Social Media Recognition	10 per year	5 per year	3 per year	2 per year	1 per year
Website Recognition	Name & Logo with Link	Name & Logo	Name & Logo	Name Recognition	Name Recognition
In-office Nourishing Hope Swag Day	✓	✓	✓		
Partnerships Available	5	10	20	20	20
Employee Engagement Pop-Up	✓	✓	✓	✓	
Employee Engagement Calendar	✓	✓	✓	✓	✓
Complimentary Nourishing Hope Gala Access	2 Tickets	2 Tickets			



nourishing  
**HOPE**  
Food for today. Hope for tomorrow.





# GROWING TOGETHER

In recent years, Nourishing Hope has grown to serve more people throughout the city. During the peak years of the pandemic, fiscal years 2021 and 2022, we were fortunate to receive an outpouring of support from donors and volunteers. We hope we can continue to count on your support to meet the ongoing heightened need.

Be a part of our growing impact and align your brand with Nourishing Hope's reputation as a leader in hunger relief.

	2020	2021	2022	2023	2024 FORECAST
<b>FOOD DISTRIBUTED</b>	2,807,855 lbs	4,979,868 lbs	4,258,832 lbs	4,801,935 lbs	5,000,000 lbs
<b>* FOOD AND SOCIAL SERVICES</b>	62,932	174,429	133,815	198,517	197,500
<b>* PROGRAM VISITS</b>	39,562	73,232	62,545	88,078	87,000
<b>VOLUNTEER HOURS</b>	71,669	80,415	80,415	80,998	85,000
<b>STAFF SIZE</b>	27	32	46	52	55
<b>REVENUE</b>	\$3,921,60	\$7,793,723	\$5,854,777	\$6,311,648	\$7,214,719
<b>FISCAL YEAR</b>	<b>2020</b>	<b>2021</b>	<b>2022</b>	<b>2023</b>	<b>2024 FORECAST</b>

\*includes repeat visitors

## JOIN OUR LIST OF SUPPORTERS



Contact: Drew Moran  
 Director of Institutional Partnerships  
 drew.moran@nourishinghopechi.org 773-525-1777 ext. 243

1716 W Hubbard St, Chicago, IL 60622  
 NourishingHopeChi.org  
 P 773.525.1777

*nourishing HOPE partnership opportunities*